

ARTICULO: 2954

Tuerca para Unión DIN 11851 (Línea Sanitaria)

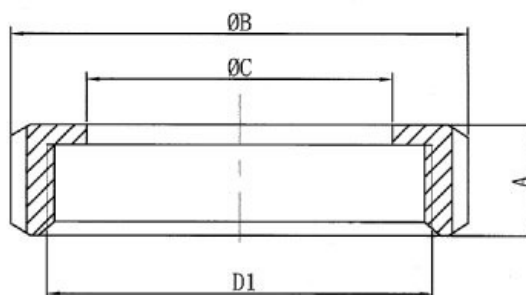
Nut for Union DIN 11851 (Sanitary Line)

Características

1. Construcción en Inox. AISI 304.
2. Roscas de acuerdo a DIN 405.
3. Terminación superficial externa Ra < 3.2.
4. Presión de trabajo máxima 10 Kg / cm².

Features

1. Made by AISI 304.
2. Thread according to Std. DIN 405.
3. External surface finished Ra < 3.2.
4. Max. Working pressure 10 Kg / cm².



DIMENSIONES GENERALES / GENERAL DIMENSIONS

Ref.	Medida / Size	DN	Dimensiones / Dimensions (mm)					Ranuras / Grooves	Peso/Weight (Kg)
			A	B	C	D1			
2954 04	1/2"	15	18	44	25	RD34 x 1/8"		4	0.080
2954 05	3/4"	20	20	54	31	RD44 x 1/6"		4	0.130
2954 06	1"	25	21	63	36	RD52 x 1/6"		4	0.172
2954 07	1 1/4"	32	21	70	42	RD58 x 1/6"		4	0.209
2954 08	1 1/2"	40	21	78	49	RD65 x 1/6"		4	0.250
2954 09	2"	50	22	92	62	RD78 x 1/6"		4	0.338
2954 10	2 1/2"	65	25	112	80	RD95 x 1/6"		6	0.523
2954 11	3"	80	29	127	94	RD110 x 1/4"		6	0.728
2954 12	4"	100	31	148	115	RD130 x 1/4"		6	0.990