

ARTICULO: 2955

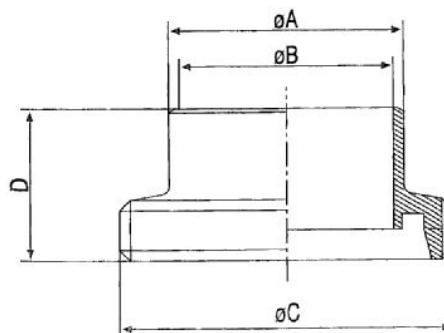
Conexión Macho para soldar Unión DIN 11851 (Línea Sanitaria) Male Connection for weld DIN 11851 (Sanitary Line)

Características

1. Construcción en Inox. AISI 304.
2. Roscas de acuerdo a DIN 405.
3. Terminación superficial interna en contacto con el fluido $Ra \leq 1.6 \mu m$.
4. Terminación superficial externa $Ra \leq 3.2 \mu m$.
5. Diámetro exterior de conexión para soldar sobredimensionado.
6. Presión de trabajo máxima 10 Kg / cm².

Features

1. Made by AISI 304.
2. Thread according to Std. DIN 405.
3. Internal Surfaces which come into contact with fluids $Ra \leq 1.6 \mu m$.
4. External surface finished $Ra \leq 3.2 \mu m$.
5. External diameter connection for weld is over-dimension.
6. Max. Working pressure 10 Kg / cm².



DIMENSIONES GENERALES / GENERAL DIMENSIONS

Ref.	Medida / Size	DN	Dimensiones / Dimensions (mm)				Peso/Weight (Kg)
			A	B	C	D	
2955 04	1/2"	15	21	16	RD34 x 1/8"	21	0.079
2955 05	3/4"	20	25	20	RD44 x 1/6"	24	0.087
2955 06	1"	25	31	26	RD52 x 1/6"	29	0.121
2955 07	1 1/4"	32	37	32	RD58 x 1/6"	32	0.148
2955 08	1 1/2"	40	43	38	RD65 x 1/6"	33	0.180
2955 09	2"	50	55	50	RD78 x 1/6"	35	0.244
2955 10	2 1/2"	65	72	66	RD95 x 1/6"	40	0.370
2955 11	3"	80	87	81	RD110 x 1/4"	45	0.526
2955 12	4"	100	106	100	RD130 x 1/4"	54	0.658