

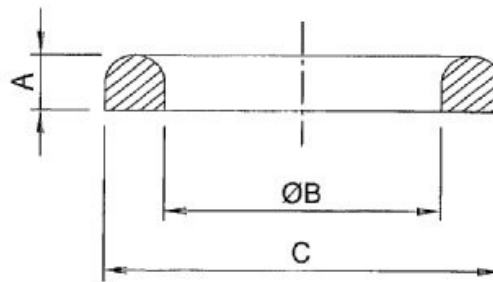
**ARTICULO: 2957**  
**Junta para Unión DIN 11851 (Línea Sanitaria)**  
**Seal for Raccord DIN 11851 (Sanitary Line)**

### Características

1. Construcción en EPDM.
2. Presión de trabajo máxima 10 bar.

### Features

1. Made of EPDM.
2. Max. Working pressure 10 bar.



### DIMENSIONES GENERALES / GENERAL DIMENSIONS

Ref.	Medida / Size	DN	Dimensiones / Dimensions (mm)			Peso/Weight (Kg)
			A	B	C	
2957 04	1/2"	15	4.5	18	26	0.003
2957 05	3/4"	20	4.5	23	33	0.003
2957 06	1"	25	5	30	40	0.004
2957 07	1 1/4"	32	5	36	46	0.004
2957 08	1 1/2"	40	5	42	52	0.005
2957 09	2"	50	5	54	64	0.006
2957 10	2 1/2"	65	5	71	81	0.007
2957 11	3"	80	5	85	95	0.008
2957 12	4"	100	5	104	114	0.012