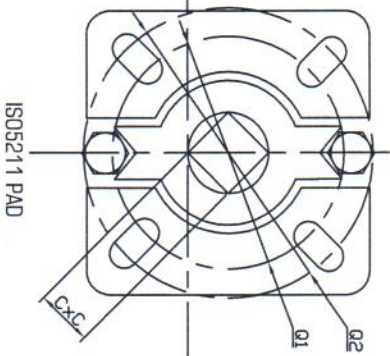
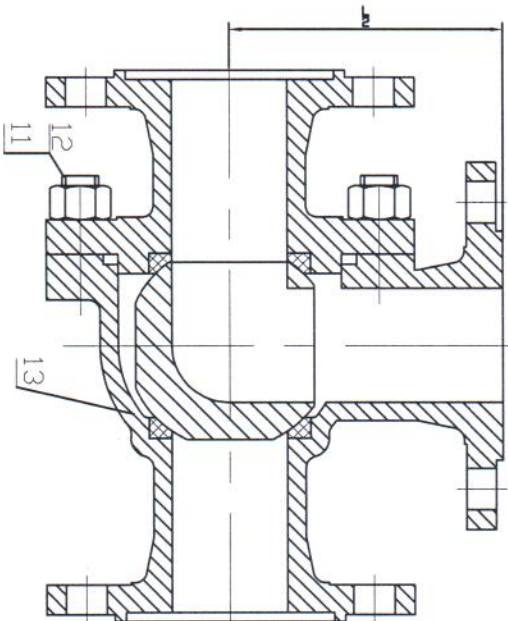
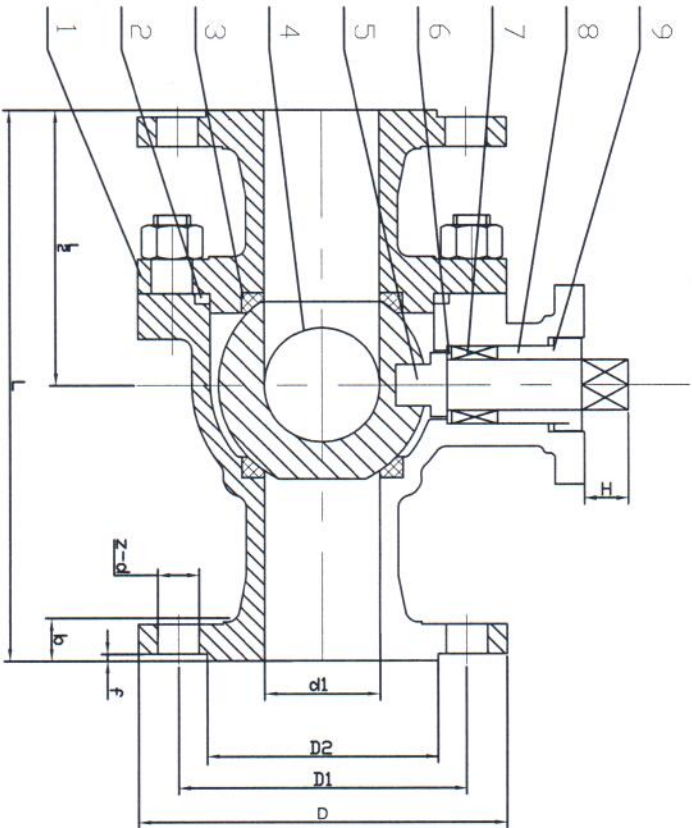
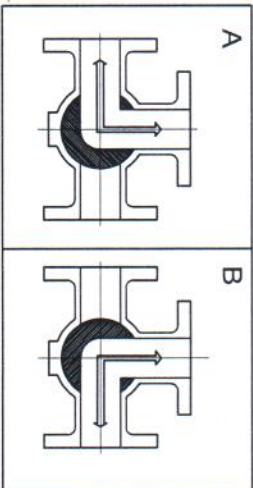


4"	Q1	Q2	C	H	320	100	157	190.5	229	24	1.6	8-ø19
3"	F07	F10	17	18	280	80	127	152.5	190	19	1.6	4-ø19
2 1/2"	F07	F10	17	18	260	65	105	139.5	178	18	1.6	4-ø19
NPS	F07	F10	17	18	L	d1	D2	D1	D	b	f	z-d

Technical Requirements
 1. Design Std.: API 6D
 2. Face to Face: Enterprise Std.
 3. Flange Std.: ANSI B16.5
 4. Inspection Std.: API 6D



L-port Diagram



SPECIFICATIONS				
Nominal Diameter	2-1/2"~4"	mm		
Nominal Pressure	150Lb	MPa		
Test Pressure	Shell Test	3.0		
	Water Seal	2.1		
	Air Seal	0.8		

12	Body	ASTM 316
11	Nut	ASTM 316
10	Stud	ASTM 316
9	Locking Piece	ASTM 316
8	Packing Gland	ASTM 316
7	Packing	PTFE
6	Packing Gasket	ASTM 316
5	Stem	ASTM 316
4	Ball	ASTM 316
3	Seat	PTFE
2	Gasket	PTFE
1	Bonnet	ASTM 316
No.	Parts Name	Materials

Q44F-Class150 NPS 2 1/2"~4"

L-port 3-Way Flanged Ball Valve

Layout of Sample Drawing

借(用)件登记
 插图
 描图
 描图
 校核
 旧底图总号
 底图总号
 签字
 日期